

RD03

Land Rover, 10 SPL, Banjo**

****THIS MODEL WAS SUPERSEDED RD127, CROSSED OUT PARTS NOT AVAILABLE**

PARTS LIST

| ITEM # | QTY | DESCRIPTION | PART # | NOTES |
|--------|-----|------------------------------------|--------------|-------|
| 01 | 1 | FLANGE CAP | 020404 | |
| 02 | 1 | CLUTCH GEAR | 050102 | |
| 03 | 1 | DIFFERENTIAL CASE | 010404 | |
| 04 | 1 | RETURN SPRINGS (PK OF 4) | 150101SP | |
| 05 | 1 | RETAINING PIN SET (PK OF 2) | 120102SP | |
| * | 1 | RETAINING PIN SET (PK OF 2) | 120302SP | |
| 06 | 1 | LONG CROSS SHAFT | 060103 | |
| 07 | 2 | SHORT CROSS SHAFT | 060303 | |
| 08 | 1 | PISTON | 040103SP | |
| 09 | 1 | BONDED SEAL | 160701SP | |
| 10 | 1 | CYLINDER CAP ASSEMBLY | 030120 | |
| 11 | 1 | CYL CAP RETAINING BOLT (PK OF 8) | 200205SP | |
| 12 | 1 | LOCKING TAB (8mm) (PK OF 8) | 150401SP | |
| 13 | 1 | TAPERED ROLLER BEARING | NOT SUPPLIED | |
| 14 | 1 | SEAL HOUSING RETAINING CLIP | 150602SP | |
| 15 | 1 | SPLINED SIDE GEAR | SEE NOTE | 3 |
| 16 | 1 | PINION THRUST WASHER (PK OF 4) | 151101SP | |
| 17 | 4 | PINION GEAR | SEE NOTE | 3 |
| 18 | 1 | SPIDER BLOCK | 070101 | |
| 19 | 1 | SIDE GEAR | SEE NOTE | 3 |
| 20 | 1 | S GEAR THRUST WASHER (PK OF 2) | 151001SP | |
| 21 | 1 | ADJUSTER NUT (1.5mm thread pitch) | 100201SP | 2 |
| * | 1 | ADJUSTER NUT (16 TPI Whitworth) | 100301SP | 2 |
| 22 | 1 | SEAL HOUSING KIT | 082001SP | |
| 23 | 1 | SEAL HOUSING O-RINGS (PK OF 2) | 160206-2 | 1 |
| * | 1 | BULKHEAD FITTING KIT (O-RING TYPE) | 170111 | |
| * | 1 | PUSH-IN FITTING (5mm to 1/8" BSPP) | 170201SP | |
| * | 1 | AIR LINE (5mm DIA X 6m LONG) | 170301SP | |
| * | 1 | SOLENOID VALVE (12V) | 180103 | |
| * | 1 | SWITCH FR OR RR LOCKER | 180225 | |
| * | 1 | CABLE TIE (PK OF 25) | 180305 | |
| * | 1 | OPERATING & SERVICE MANUAL | 210200 | |
| * | 1 | INSTALLATION GUIDE | 210203 | |

* *Not illustrated in exploded view*

NOTES

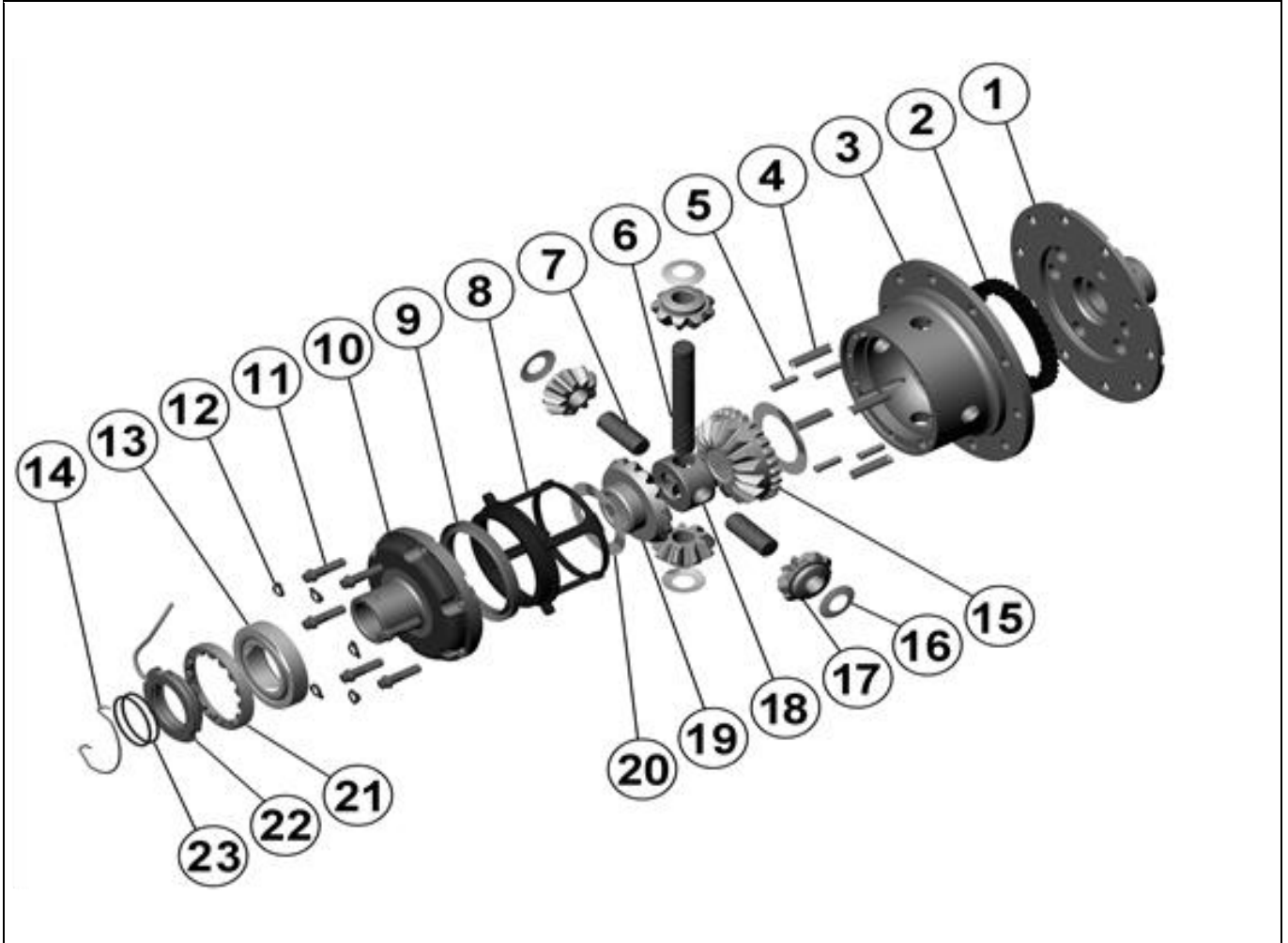
- 1 For replacement O-rings use only BS130 Viton 75.
- 2 Both types of Land Rover adjuster nut are supplied with this model. Early models using 100301 will require a special carrier bearing to suit the Air Locker. (Timken #11162 / 11300)
- 3 Available only as complete 6 gear set # 728B014
 - 5mm [3/16"] ring gear spacer plate (ARB part# 'RD03A') is available for use with early Land Rover 4.70:1 ratio gears but longer bolts must be used. (Land Rover part# 576521)
 - Refer to seal housing set-up tech note ([Section 5.2](#)).
 - For information on RD03 models with 4 cylinder cap bolts, contact ARB.
 - Refer to Land Rover axle update tech note for 10 to 24 spline conversion information ([Section 5.14](#)).

RD03

Land Rover, 10 SPL, Banjo**

****THIS MODEL WAS SUPERSEDED RD127, CROSSED OUT PARTS NOT AVAILABLE**

EXPLODED DIAGRAM



SPECIFICATIONS

| | |
|--------------------|----------------------------|
| Axle Spline | 10 tooth, Ø28.2mm [1.11"] |
| Ratio Supported | 3.54:1 |
| Ring Gear ID | 125.4mm [4.94"] |
| Ring Gear Bolts | 10 bolts on Ø142mm [5.59"] |
| Ring Gear Torque | 58Nm [43 ft-lb] |
| Backlash | 0.10-0.17mm [0.004-0.007"] |
| Bearing Cap Torque | 90Nm [66 ft-lb] |

ARB Corporation Ltd • 42-44 Garden St Kilsyth VIC 3137 Australia
ARB 4X4 Accessories USA • 720 SW 34th St Renton WA 98057 USA
Australia & International Customer Service • +61 3 9761 6622
North America Customer Service • Toll Free 866 293 9078
www.arb.com.au (AUS & Int) www.arbusa.com (N. America)