

**RD07**

Dana 44,30 SPL,3.73 & DN \*\*

**\*\*THIS MODEL WAS SUPERSEDED BY RD117, CROSSED OUT PARTS NOT AVAILABLE**

### PARTS LIST

| ITEM # | QTY | DESCRIPTION                        | PART #   | NOTES |
|--------|-----|------------------------------------|----------|-------|
| 01     | 1   | FLANGE CAP                         | 020602   |       |
| 02     | 1   | CLUTCH GEAR                        | 050102   |       |
| 03     | 1   | DIFFERENTIAL CASE                  | 010604   |       |
| 04     | 1   | RETURN SPRINGS (PK OF 4)           | 150101SP |       |
| 05     | 1   | RETAINING PIN SET (PK OF 4)        | 120102SP |       |
| *      | 1   | RETAINING PIN SET (PK OF 4)        | 120302SP |       |
| 06     | 1   | LONG CROSS SHAFT                   | 060403   |       |
| 07     | 2   | SHORT CROSS SHAFT                  | 060303   |       |
| 08     | 1   | PISTON                             | 040103SP |       |
| 09     | 1   | BONDED SEAL                        | 160701SP |       |
| 10     | 1   | CYLINDER CAP                       | 030410   |       |
| 11     | 1   | SEAL HOUSING O-RINGS (PK OF 2)     | 160205-2 | 1     |
| 12     | 1   | CYL CAP RETAINING BOLT (PK OF 8)   | 200205SP |       |
| 13     | 1   | LOCKING TAB (8mm) (PK OF 8)        | 150401SP |       |
| 14     | 1   | TAPERED ROLLER BEARING             | 160101   | 2     |
| 15     | 1   | SEAL HOUSING KIT                   | 080301SP |       |
| 16     | 1   | SHIM KIT                           | SHK004   |       |
| 17     | 1   | SPLINED SIDE GEAR                  | SEE NOTE | 3     |
| 18     | 1   | PINION THRUST WASHER (PK OF 4)     | 151101SP |       |
| 19     | 4   | PINION GEAR                        | SEE NOTE | 3     |
| 20     | 1   | SPIDER BLOCK                       | 070401   |       |
| 21     | 1   | SIDE GEAR                          | SEE NOTE | 3     |
| 22     | 1   | S GEAR THRUST WASHER (PK OF 2)     | 151003SP |       |
| *      | 1   | BULKHEAD FITTING KIT (O-RING TYPE) | 170111   |       |
| *      | 1   | PUSH-IN FITTING (5mm to 1/8"BSPP)  | 170201SP |       |
| *      | 1   | AIR LINE (5mm DIA X 6m LONG)       | 170301SP |       |
| *      | 1   | SOLENOID VALVE (12V)               | 180103   |       |
| *      | 1   | SWITCH FR OR RR LOCKER             | 180225   |       |
| *      | 1   | CABLE TIE (PK OF 25)               | 180305   |       |
| *      | 1   | OPERATING & SERVICE MANUAL         | 210200   |       |
| *      | 1   | INSTALLATION GUIDE                 | 210207   |       |

\* *Not illustrated in exploded view*

### NOTES

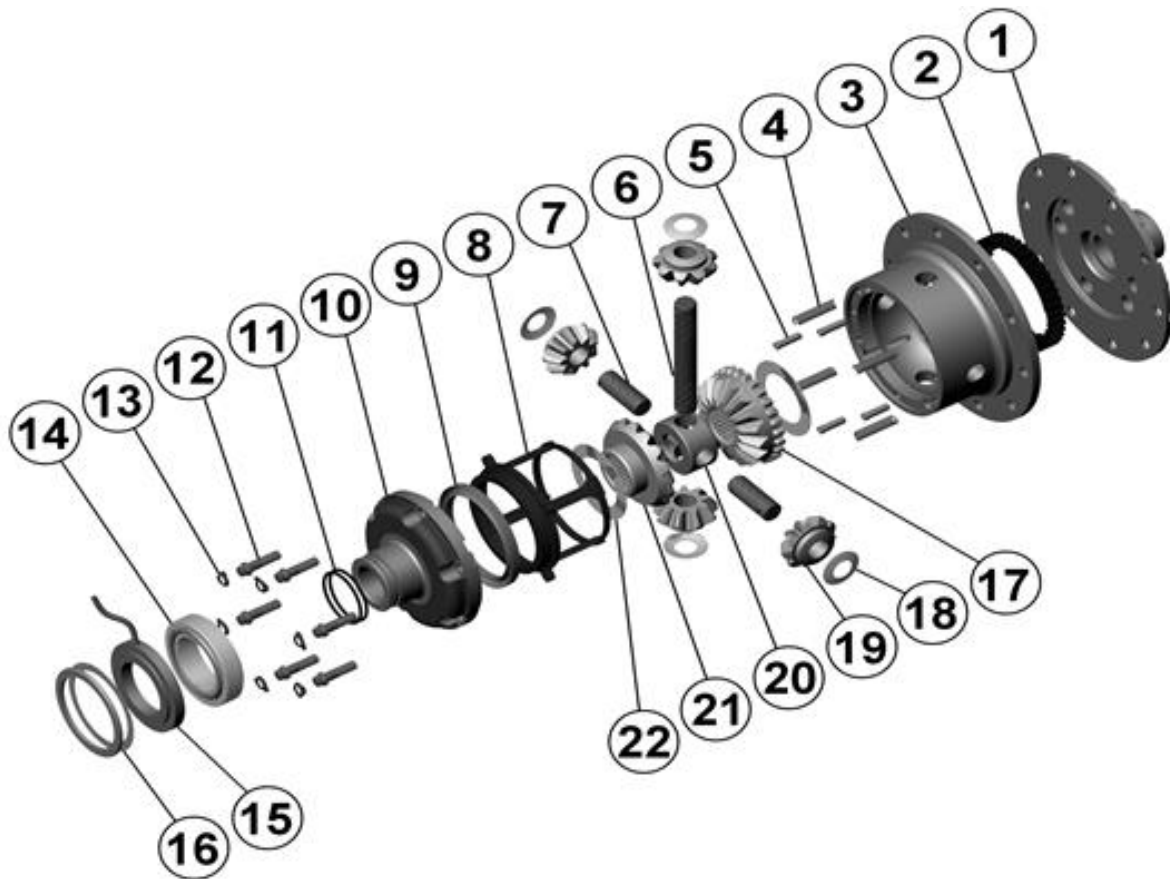
- 1 For replacement O-rings use only BS132 Viton 75
- 2 For replacement bearing use Timken part # LM104949 / LM104912.
- 3 Available only as complete 6 gear set # 728B041
- For Ford IFS installation refer to tech note ([Section 5.12](#)) for alternative to C-clip use.
- For ratios of 3.92:1 and up refer to RD116 ([Section 2.116](#)).
- For information on RD07 models with 4 cylinder cap bolts, contact ARB.
- Suitable for use with ABS tone ring.

**RD07**

Dana 44,30 SPL,3.73 & DN \*\*

**\*\*THIS MODEL WAS SUPERSEDED BY RD117, CROSSED OUT PARTS NOT AVAILABLE**

### EXPLODED DIAGRAM



### SPECIFICATIONS

|                    |                            |
|--------------------|----------------------------|
| Axle Spline        | 30 tooth, Ø33.3mm [1.31"]  |
| Ratio Supported    | 3.73:1 & down              |
| Ring Gear ID       | 141.3mm [5.56"]            |
| Ring Gear OD       | 216mm [8.5"]               |
| Ring Gear Bolts    | 10 bolts on Ø168mm [6.61"] |
| Ring Gear Torque   | 75Nm [55 ft-lb]            |
| Backlash           | 0.15-0.25mm [0.006-0.010"] |
| Bearing Cap Torque | 81Nm [60 ft-lb]            |

ARB Corporation Ltd • 42-44 Garden St Kilsyth VIC 3137 Australia  
ARB 4X4 Accessories USA • 720 SW 34<sup>th</sup> St Renton WA 98057 USA  
Australia & International Customer Service • +61 3 9761 6622  
North America Customer Service • Toll Free 866 293 9078  
www.arb.com.au (AUS & Int) www.arbusa.com (N. America)