

RD146

Toyota 10.5",RR,36 SPL

PARTS LIST

ITEM #	QTY	DESCRIPTION	PART #	NOTES
1	1	SEAL HOUSING O-RINGS (PK OF 2)	160227-2	1
2	1	SEAL HOUSING KIT	081815SP	
3	2	SHIM KIT	SHK005	
*	1	MASTER SHIM	150341	
4	1	BONDED SEAL	160703SP	
5	1	CLUTCH GEAR & WAVESPRING KIT	050907SP	5
*	1	CLUTCH GEAR & RETURN SPRINGS KIT	050807SP	5
6	1	SPIDER BLOCK	070402SP	
7	1	LONG CROSS SHAFT	061501SP	
8	1	SIDE GEAR	SEE NOTE	2
9	1	COUNTERSUNK SCREW (PK OF 2)	200214SP	
10	1	RETAINING PIN (PK OF 4)	120601SP	
11	2	TAPERED ROLLER BEARING	NOT SUPPLIED	
12	1	FLANGE CAP KIT	028609SP	
13	1	WAVESPRING	150707SP	5
*	1	RETURN SPRINGS KIT	150107SP	5
14	1	SPLINED SIDE GEAR	SEE NOTE	2
15	2	SHORT CROSS SHAFT	061601SP	
16	4	PINION GEAR	SEE NOTE	2
17	4	PINION THRUST WASHER	SEE NOTE	3
18	2	SIDE GEAR THRUST WASHER	SEE NOTE	3
19	1	DIFFERENTIAL CASE (SUITS WAVESPRING ONLY)	013229SP	4
*	1	DIFFERENTIAL CASE (SUITS RETURN SPRINGS ONLY)	013209SP	4
*	1	BULKHEAD FITTING KIT (BANJO TYPE)	170114	6
*	1	AIR LINE (6mm DIA X 6m LONG)	170314	6
*	1	SOLENOID VALVE (12V)	180103	
*	1	SWITCH RR LOCKER	180224	
*	1	CABLE TIE (PK OF 25)	180305	
*	1	OPERATING & SERVICE MANUAL	210200	
*	1	INSTALLATION GUIDE	2102146	

* *Not illustrated in exploded view*

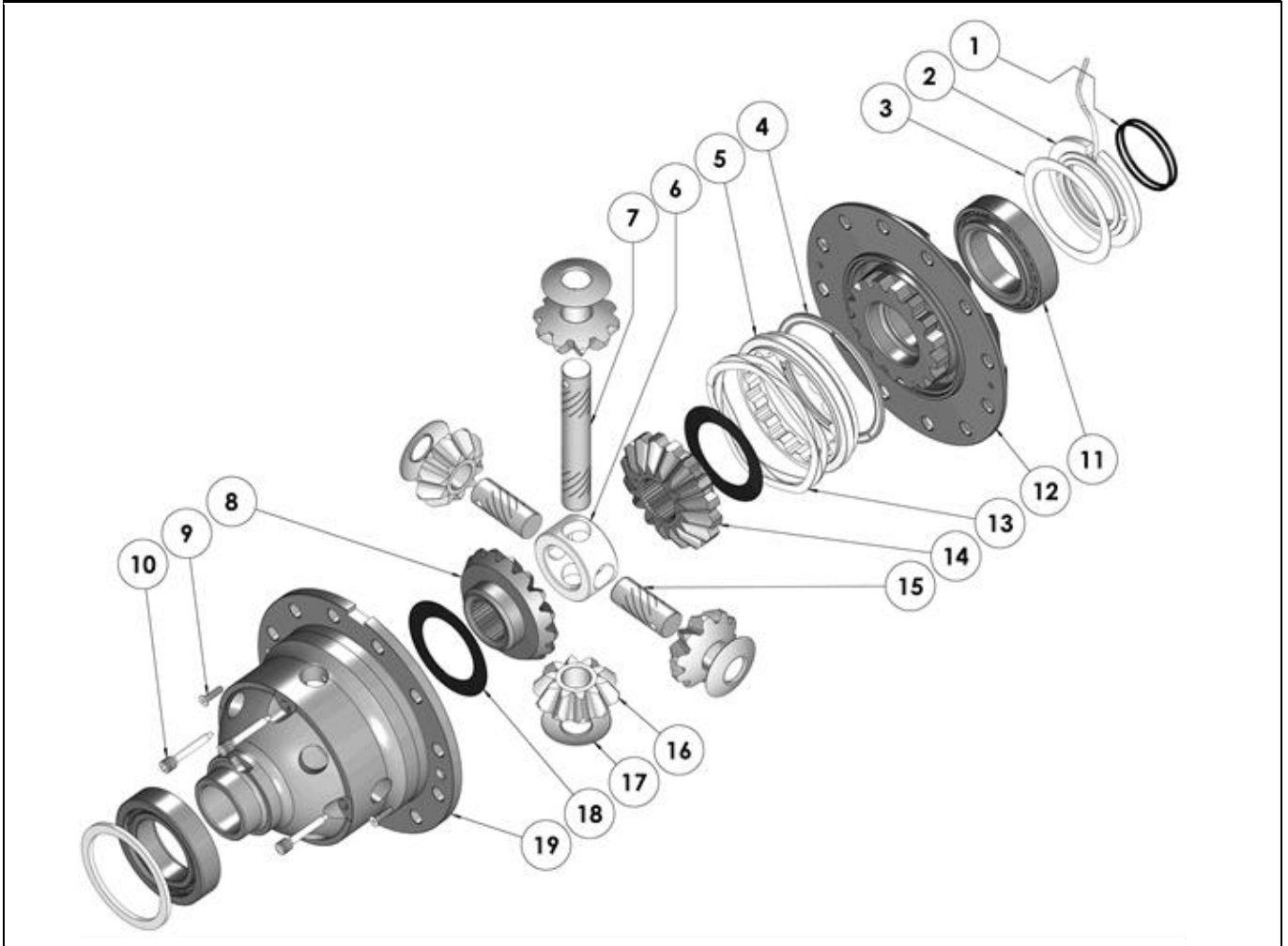
NOTES

- 1 For replacement O-rings use only BS138 Viton 75.
- 2 Available only as complete 6 gear set # 728K061.
- 3 Available only as complete thrust washer kit #730K01.
- 4 Identify the spring type in your diff and order the correct diff case to replace.
- 5 Replace the spring and/or the corresponding clutch gear with the same type.
(If spring type is changed, a matching diff case must also be used. See item 19.)
- 6 All diffs produced before serial #17070001 came with 5mm air connection system. For information contact ARB.
- For the 34 spline model see RD183 ([Section 2.183](#)).

RD146

Toyota 10.5",RR,36 SPL

EXPLODED DIAGRAM



SPECIFICATIONS

Axle Spline	36 tooth, Ø36.8mm [1.44"]
Ratio Supported	All
Ring Gear ID	167.0mm [6.57"]
Ring Gear OD	267mm [10.5"]
Ring Gear Bolts	12 bolts on Ø204mm [8.03"]
Backlash	0.15-0.25mm [0.006-0.010"]