

RD201

Nissan C200,31 SPL

PARTS LIST

| ITEM # | QTY | DESCRIPTION | PART # | NOTES |
|--------|-----|--------------------------------|--------------|-------|
| 1 | 1 | FLANGE CAP KIT | 027334SP | |
| 2 | 1 | BONDED SEAL | 160702SP | |
| 3 | 1 | CLUTCH GEAR & WAVESPRING KIT | 050906SP | |
| 4 | 4 | SHORT CROSS SHAFT | 060403SP | |
| 5 | 1 | SIDE GEAR | SEE NOTE | 2 |
| 6 | 2 | SIDE GEAR THRUST WASHER | SEE NOTE | 3 |
| 7 | 1 | COUNTERSUNK SCREW (PK OF 2) | 200213SP | |
| 8 | 1 | RETAINING PIN SET (PK OF 4) | 120601SP | |
| 9 | * | TAPERED ROLLER BEARING | NOT SUPPLIED | |
| 10 | 1 | SHIM KIT | SHK009 | |
| 11 | 1 | SEAL HOUSING KIT | 080803SP | |
| 12 | 1 | SEAL HOUSING O-RINGS (PK OF 2) | 160205-2 | 1 |
| 13 | 1 | WAVESPRING | 150706SP | |
| 14 | 1 | SPLINED SIDE GEAR | SEE NOTE | 2 |
| 15 | 4 | PINION GEAR | SEE NOTE | 2 |
| 16 | 4 | PINION THRUST WASHER | SEE NOTE | 3 |
| 17 | 1 | SPIDER BLOCK | 070201SP | |
| 18 | 1 | THRUST BLOCK | 110501SP | |
| 19 | 1 | DIFFERENTIAL CASE | 013033SP | |
| * | 1 | BULKHEAD FITTING (BANJO TYPE) | 170114 | 4 |
| * | 1 | AIR LINE (6mm DIA X 6m LONG) | 170314 | 4 |
| * | 1 | SOLENOID VALVE (12V) | 180103 | |
| * | 1 | SWITCH RR LOCKER | 180224 | |
| * | 1 | CABLE TIE (PK OF 25) | 180305 | |
| * | 1 | OPERATING & SERVICE MANUAL | 210200 | |
| * | 1 | INSTALLATION GUIDE | 2102201 | |

* *Not illustrated in exploded view*

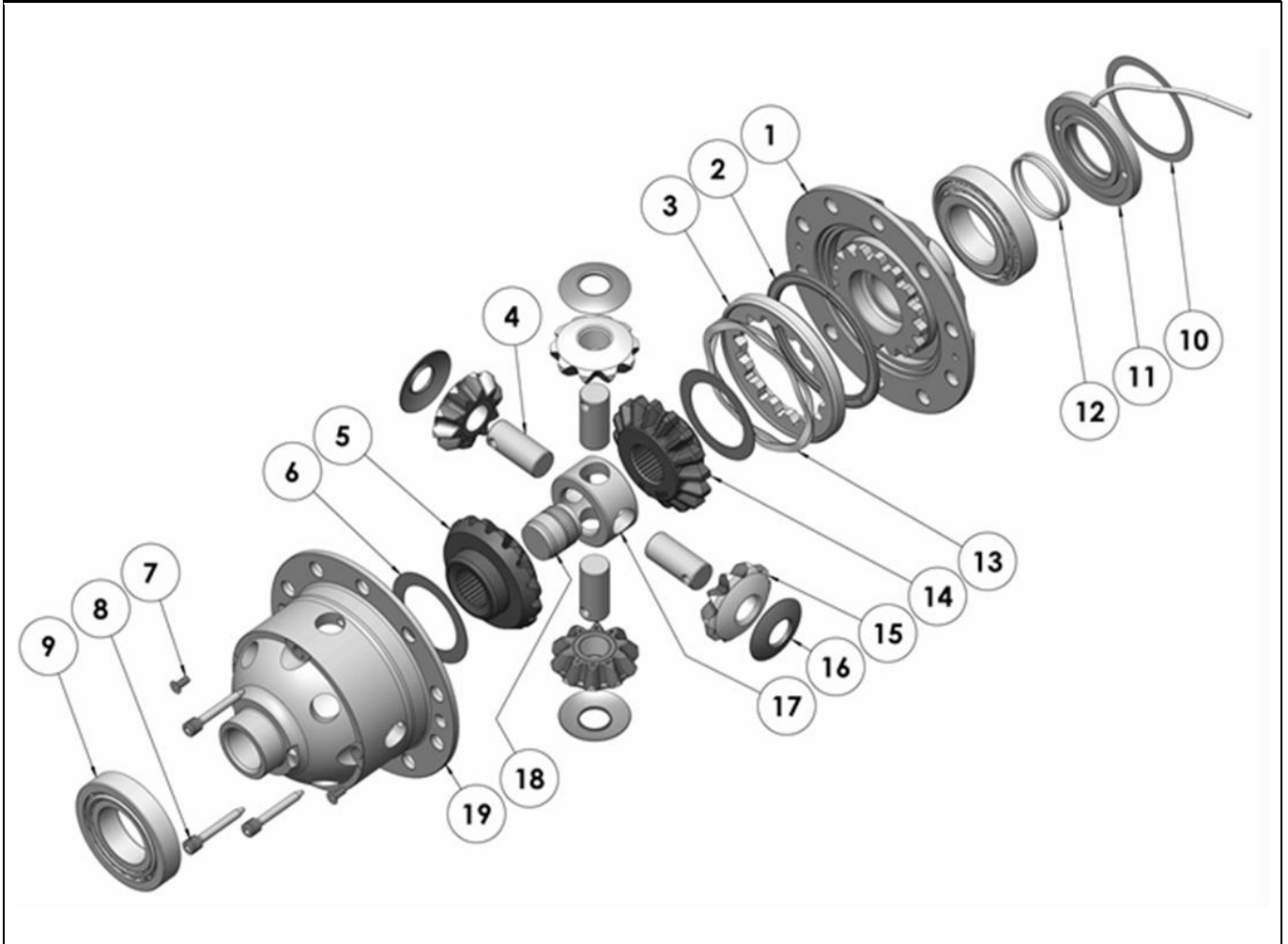
NOTES

- 1 For replacement O-rings use only BS132 Viton 75.
- 2 Available only as complete 6 gear set # 728H151
- 3 Available only as complete thrust washer kit #730H01
- 4 All diffs produced before serial #17070001 came with 5mm air connection system. For information contact ARB.
- When used with 10mm ring gear bolts, adapter sleeves of the following size are required:
 Outside: Ø12.15mm [0.478"]
 Inside: Ø10.45mm [0.411"]
 Length: 10mm [0.39"]
 Bolt Torque: 74Nm [55 ft-lb]
- Refer to axle modification tech note ([Sec. 5.4](#)) if axle binds inside carrier.
- Refer to pinion modification tech note ([Sec. 5.6](#))
- For 29 spline model refer to RD202 ([Sec. 2.202](#))

RD201

Nissan C200,31 SPL

EXPLODED DIAGRAM



SPECIFICATIONS

| | |
|---------------------|----------------------------|
| Axle Spline | 31 tooth, Ø32.0mm [1.26"] |
| Ratio Supported | All |
| Ring Gear ID | 128.0mm [5.04"] |
| Ring Gear Bolts | 10 bolts on Ø150mm [5.91"] |
| Ring Gear Bolt Size | 12mm |
| Ring Gear Torque | 120Nm [89 ft-lb] |
| Backlash | 0.13-0.18mm [0.005-0.007"] |
| Bearing Cap Torque | 93Nm [69 ft-lb] |

ARB Corporation Ltd • 42-44 Garden St Kilsyth VIC 3137 Australia
ARB 4X4 Accessories USA • 720 SW 34th St Renton WA 98057 USA
Australia & International Customer Service • +61 3 9761 6622
North America Customer Service • Toll Free 866 293 9078
www.arb.com.au (AUS & Int) www.arbusa.com (N. America)

