

**RD203**

Isuzu IFS, 17 SPL

### PARTS LIST

ITEM #	QTY	DESCRIPTION	PART #	NOTES
01	1	FLANGE CAP KIT	028510SP	
02	1	BONDED SEAL	160701SP	
03	1	CLUTCH GEAR & WAVESPRING KIT	050902SP	
04	1	LONG CROSS SHAFT	061302SP	
05	2	SHORT CROSS SHAFT	061402SP	
06	1	SIDE GEAR	SEE NOTE	2
07	2	SIDE GEAR THRUST WASHER	SEE NOTE	3
08	1	COUNTERSUNK SCREW (PK OF 2)	200213SP	
09	1	RETAINING PIN SET (PK OF 4)	120601SP	
10	-	TAPERED ROLLER BEARING	NOT SUPPLIED	
11	1	SHIM KIT	SHK003	
12	1	SEAL HOUSING KIT	081606SP	
13	1	SEAL HOUSING O-RINGS (PK OF 2)	160206-2	1
14	1	WAVESPRING	150702SP	
15	1	SPLINED SIDE GEAR	SEE NOTE	2
16	4	PINION GEAR	SEE NOTE	2
17	4	PINION THRUST WASHER	SEE NOTE	3
18	1	SPIDER BLOCK	070503SP	
19	1	DIFFERENTIAL CASE	013110SP	
*	1	BULKHEAD FITTING KIT (BANJO TYPE)	170114	4
*	1	AIR LINE (6mm DIA X 6m LONG)	170314	4
*	1	SOLENOID VALVE (12V)	180103	
*	1	SWITCH FR LOCKER	180223	
*	1	CABLE TIE (PK OF 25)	180305	
*	1	OPERATING & SERVICE MANUAL	210200	
*	1	INSTALLATION GUIDE	2102203	

\* *Not illustrated in exploded view*

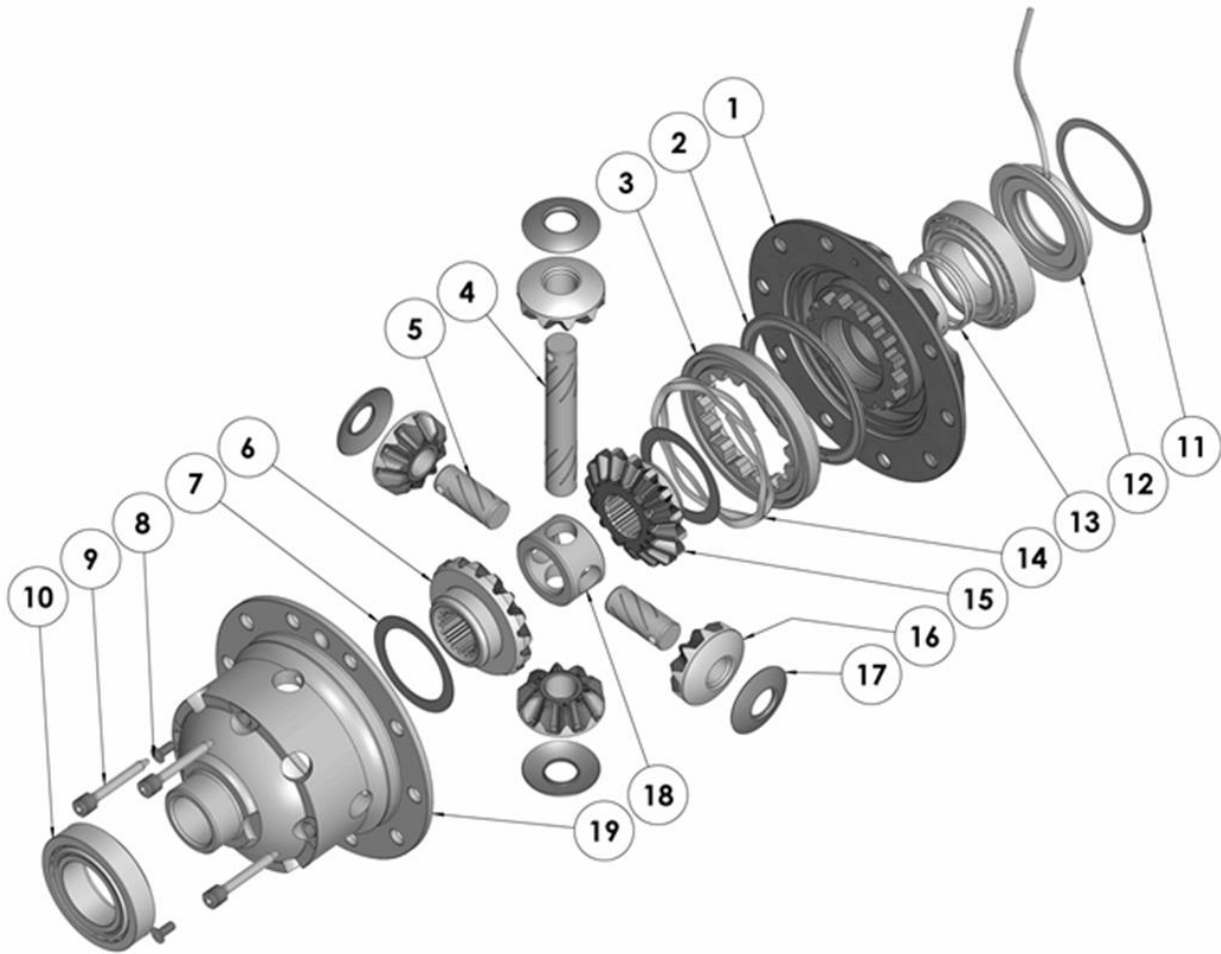
### NOTES

- 1 For replacement O-rings, use only BS130 Viton 75.
- 2 Available only as complete 6 gear set # 728J071
- 3 Available only as complete thrust washer kit #730J01
- 4 All diffs produced before serial #17070001 came with 5mm air connection system. For information contact ARB.

**RD203**

Isuzu IFS, 17 SPL

### EXPLODED DIAGRAM



### SPECIFICATIONS

Axle Spline	17 tooth, Ø28.4mm [1.12"]
Ratio Supported	All
Ring Gear ID	121.9mm [4.80"]
Ring Gear Bolts	10 bolts on Ø144mm [5.67"]
Ring Gear Torque	107 Nm [79 ft-lb]
Backlash	0.15-0.20mm [0.006-0.008"]
Bearing Cap Torque	98 Nm [72 ft-lb]

ARB Corporation Ltd • 42-44 Garden St Kilsyth VIC 3137 Australia  
ARB 4X4 Accessories USA • 720 SW 34<sup>th</sup> St Renton WA 98057 USA  
Australia & International Customer Service • +61 3 9761 6622  
North America Customer Service • Toll Free 866 293 9078  
www.arb.com.au (AUS & Int) www.arbusa.com (N. America)

