

**RD210**

MITSUBISHI 8", 28 SPL, RR

### PARTS LIST

ITEM #	QTY	DESCRIPTION	PART #	NOTES
1	1	FLANGE CAP KIT	028507SP	
2	1	BONDED SEAL	160701SP	
3	1	CLUTCH GEAR & WAVESPRING KIT	050902SP	
4	1	WAVESPRING	150702SP	
5	4	SHORT CROSS SHAFT	061402SP	
6	4	PINION GEAR	SEE NOTE	3
7	1	THRUST BLOCK	110512SP	
8	1	SIDE GEAR	SEE NOTE	3
9	2	SIDE GEAR THRUST WASHER	SEE NOTE	4
10	1	DIFFERENTIAL CASE	013119SP	
11	1	COUNTERSUNK SCREW (PK OF 2)	200213SP	
12	1	RETAINING PIN SET (PK OF 4)	120601SP	
13	1	MASTER SHIM	150320	
14	1	TAPERED ROLLER BEARING	160117	2
15	1	SEAL HOUSING KIT	081702SP	
16	1	SEAL HOUSING O-RING (PK OF 2)	160251-2	1
17	1	SPLINED SIDE GEAR	SEE NOTE	3
18	1	SPIDER BLOCK	070503SP	
19	4	PINION THRUST WASHER	SEE NOTE	4
*	1	AIR LINE (6mm DIA X 6m LONG)	170314	5
*	1	BULKHEAD FITTING KIT (BANJO TYPE)	170114	5
*	1	SOLENOID VALVE (12V)	180103	
*	1	CABLE TIE (PK OF 25)	180305	
*	1	SWITCH RR LOCKER	180224	
*	1	OPERATING & SERVICE MANUAL	210200	
*	1	INSTALLATION GUIDE	2102210	

\* *Not illustrated in exploded view*

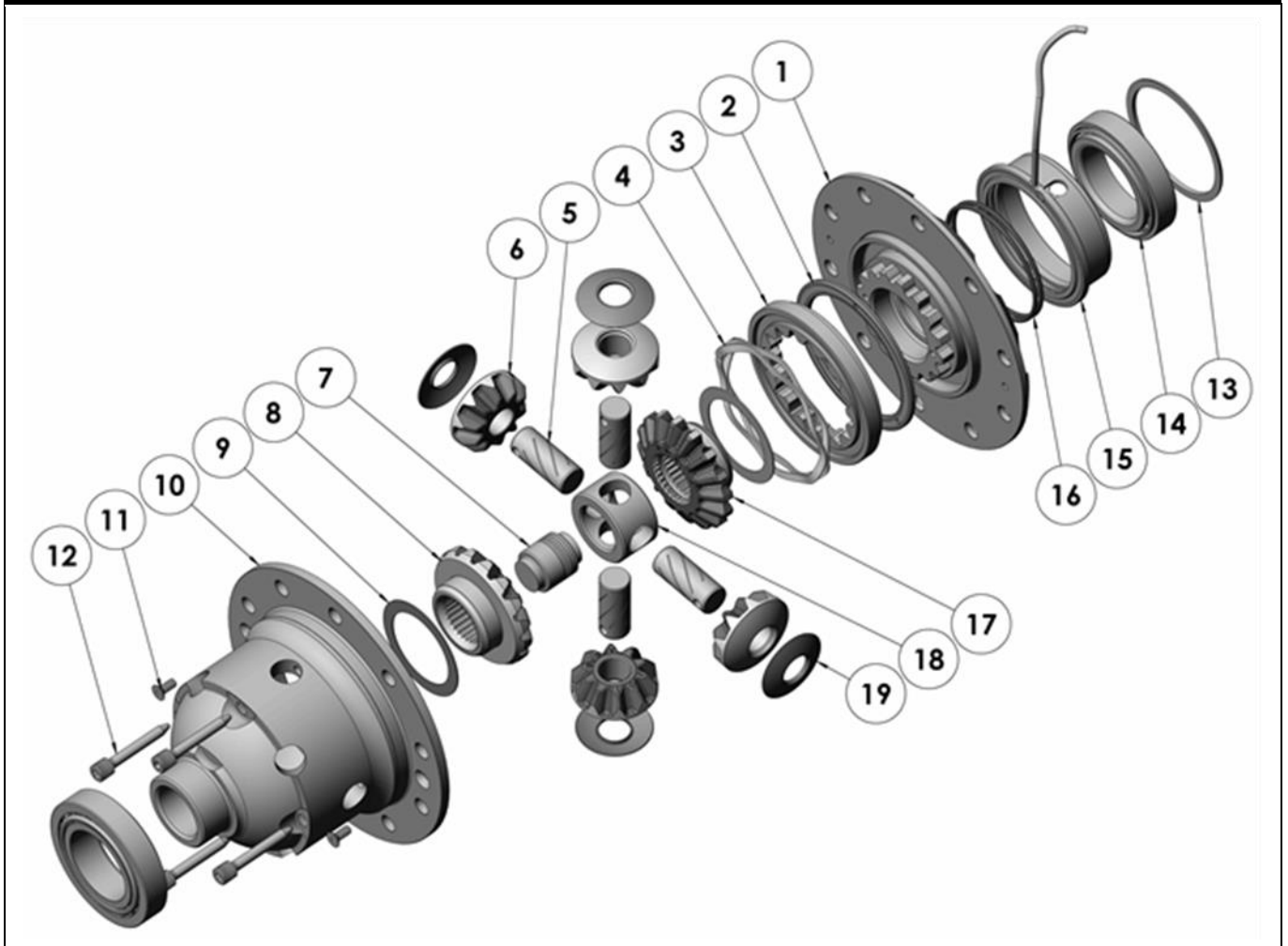
### NOTES

- 1 For replacement O-rings use only BS149 Viton 75.
- 2 For replacement bearing use Timken part # LM503349 / LM503310.
- 3 Available only as complete 6 gear set # 728J041
- 4 Available only as complete thrust washer kit #730J01
- 5 All diffs produced before serial # 17070001 came with 5mm air connection system. For information contact ARB.
- For the larger 9" Mitsubishi 28 spline rear differentials with 12 ring gear bolts refer to RD212 ([Section 2.212](#)).

**RD210**

MITSUBISHI 8", 28 SPL, RR

### EXPLODED DIAGRAM



### SPECIFICATIONS

Axle Spline	28 tooth, Ø30.5mm [1.20"]
Ratio Supported	All
Ring Gear ID	124.0mm [4.88"]
Ring Gear Bolts	10 bolts on Ø150mm [5.91"]
Ring Gear Torque	85Nm [63 ft-lb]
Backlash	0.13-0.18mm [0.005-0.007"]
Bearing Cap Torque	60Nm [44 ft-lb]

ARB Corporation Ltd • 42-44 Garden St Kilsyth VIC 3137 Australia  
ARB 4X4 Accessories USA • 720 SW 34<sup>th</sup> St Renton WA 98057 USA  
Australia & International Customer Service • +61 3 9761 6622  
North America Customer Service • Toll Free 866 293 9078  
[www.arb.com.au](http://www.arb.com.au) (AUS & Int) [www.arbusa.com](http://www.arbusa.com) (N. America)

