

RD223

Ford Ranger PJ,PK/Mazda BT50,IFS,30 SPL

PARTS LIST

| ITEM # | QTY | DESCRIPTION | PART # | NOTES |
|--------|-----|-----------------------------------|--------------|-------|
| 01 | 1 | FLANGE CAP KIT | 028523SP | |
| 02 | 1 | BONDED SEAL | 160701SP | |
| 03 | 1 | CLUTCH GEAR & WAVESPRING KIT | 050903SP | |
| 04 | 2 | SHORT CROSS SHAFT | 061402SP | |
| 05 | 1 | LONG CROSS SHAFT | 061302SP | |
| 06 | 1 | SIDE GEAR | SEE NOTE | 2 |
| 07 | 2 | SIDE GEAR THRUST WASHER | SEE NOTE | 3 |
| 08 | 1 | COUNTERSUNK SCREW (PK OF 2) | 200213SP | |
| 09 | 1 | RETAINING PIN SET (PK OF 4) | 120601SP | |
| 10 | - | TAPERED ROLLER BEARING | NOT SUPPLIED | |
| 11 | 1 | SEAL HOUSING RETAINING CLIP | 150601SP | |
| 12 | 1 | SEAL HOUSING KIT | 081902SP | |
| 13 | 1 | SEAL HOUSING O-RINGS (PK OF 2) | 160235-2 | 1 |
| 14 | 1 | ADJUSTER NUT | 100101SP | |
| 15 | 1 | WAVESPRING | 150702SP | |
| 16 | 1 | SPLINED SIDE GEAR | SEE NOTE | 2 |
| 17 | 4 | PINION GEAR | SEE NOTE | 2 |
| 18 | 4 | PINION THRUST WASHER | SEE NOTE | 3 |
| 19 | 1 | SPIDER BLOCK | 070503SP | |
| 20 | 1 | DIFFERENTIAL CASE | 013123SP | |
| * | 1 | BULKHEAD FITTING KIT (BANJO TYPE) | 170114 | 4 |
| * | 1 | AIR LINE (6mm DIA X 6m LONG) | 170314 | 4 |
| * | 1 | SOLENOID VALVE (12V) | 180103 | |
| * | 1 | SWITCH FR LOCKER | 180223 | |
| * | 1 | CABLE TIE (PK OF 25) | 180305 | |
| * | 1 | OPERATING & SERVICE MANUAL | 210200 | |
| * | 1 | INSTALLATION GUIDE | 2102223 | |

* *Not illustrated in exploded view*

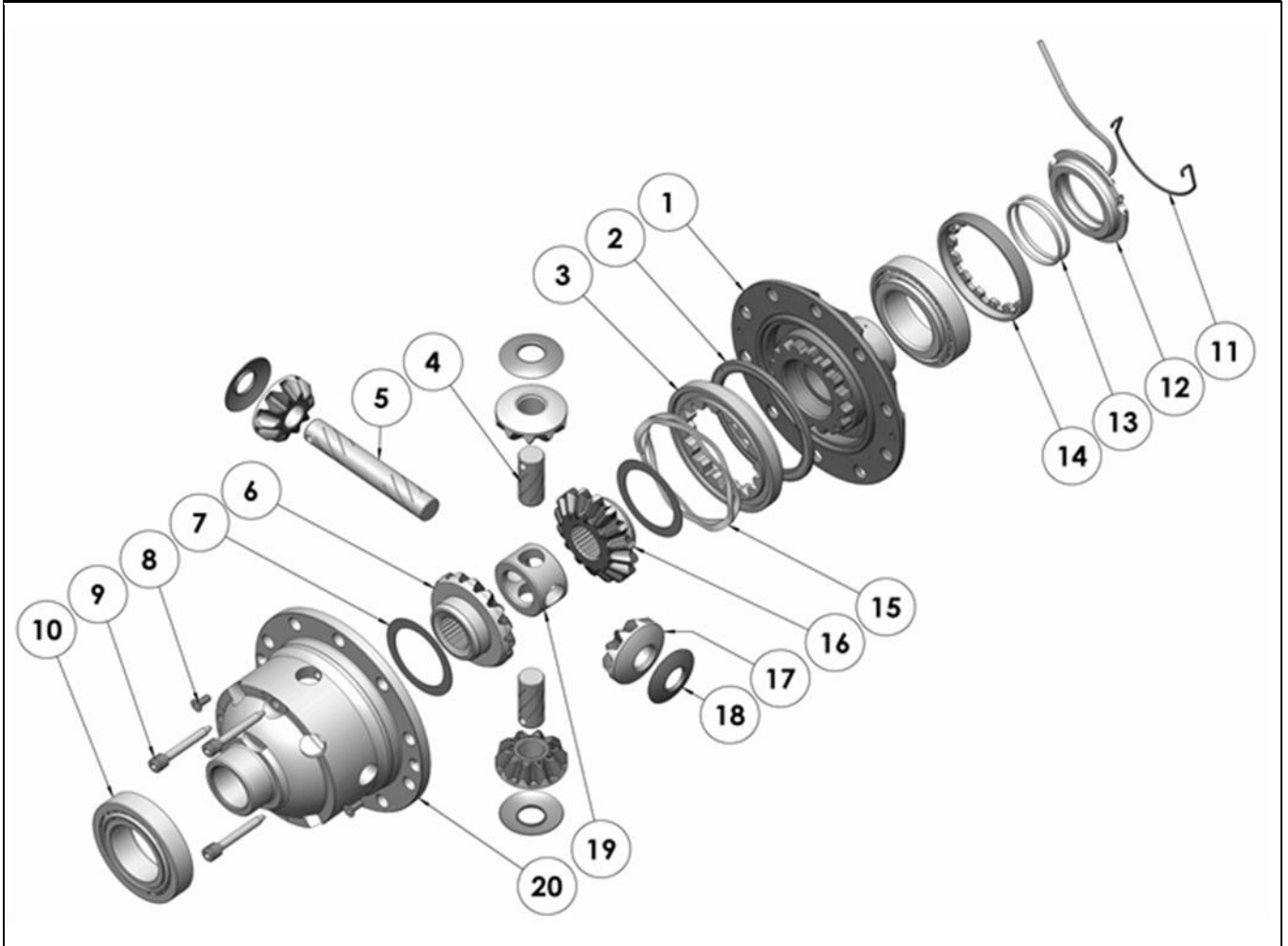
NOTES

- 1 For replacement O-rings use only BS133 Viton 75.
- 2 Available only as complete 6 gear set # 728J061
- 3 Available only as complete thrust washer kit #730J01
- 4 All diffs produced before serial #17070001 came with 5mm air connection system. For information contact ARB.
- For seal housing set-up refer to tech note ([Section 5.2](#)).

RD223

Ford Ranger PJ,PK/Mazda BT50,IFS,30 SPL

EXPLODED DIAGRAM



SPECIFICATIONS

| | |
|--------------------|-------------------------------|
| Axle Spline | 30 tooth, Ø30.8mm [1.21"] |
| Ratio Supported | All |
| Ring Gear ID | 127.9mm [5.04"] |
| Ring Gear OD | 190.0mm [7.48"] |
| Ring Gear Bolts | 10 bolts on Ø160mm [6.30"] |
| Ring Gear Torque | 68.6-83.3Nm [50.6-61.4 ft-lb] |
| Backlash | 0.09-0.11mm [0.0035"-0.0043"] |
| Bearing Cap Torque | 73-107Nm [53.9-78.9 ft-lb] |

ARB Corporation Ltd • 42-44 Garden St Kilsyth VIC 3137 Australia
ARB 4X4 Accessories USA • 720 SW 34th St Renton WA 98057 USA
Australia & International Customer Service • +61 3 9761 6622
North America Customer Service • Toll Free 866 293 9078
www.arb.com.au (AUS & Int) www.arbusa.com (N. America)

