

RD229

Nissan D23 RR, 34 Spline

PARTS LIST

ITEM #	QTY	DESCRIPTION	PART #	NOTES
1	1	BONDED SEAL	160702SP	
2	1	CLUTCH GEAR & WAVESPRING KIT	050906SP	
3	1	WAVESPRING	150706SP	
4	4	PINION THRUST WASHER	SEE NOTE	3
5	4	PINION GEAR	SEE NOTE	2
6	1	LONG CROSS SHAFT	060204SP	
7	1	SIDE GEAR	SEE NOTE	2
8	2	SIDE GEAR THRUST WASHER	SEE NOTE	3
9	1	DIFFERENTIAL CASE	013045SP	
10	1	COUNTERSUNK SCREW (PK OF 2)	200213SP	
11	1	RETAINING PIN SET (PK OF 4)	120601SP	
12	2	ADJUSTER NUT	NOT SUPPLIED	
13	1	SEAL HOUSING O-RINGS (PK OF 2)	160227-2	1
14	1	SEAL HOUSING KIT	081821SP	
15	2	TAPERED ROLLER BEARING	NOT SUPPLIED	
16	1	FLANGE CAP KIT	027345SP	
17	1	SPLINED SIDE GEAR	SEE NOTE	2
18	1	SPIDER BLOCK	070201SP	
19	2	SHORT CROSS SHAFT	060403SP	
*	1	BULKHEAD FITTING KIT (BANJO TYPE)	170114	4
*	1	AIR LINE (6mm DIA X 6m LONG)	170314	4
*	1	SOLENOID VALVE (12V)	180103	
*	1	SWITCH RR LOCKER	180224	
*	1	CABLE TIE (PK OF 25)	180305	
*	1	OPERATING & SERVICE MANUAL	210200	
*	1	INSTALLATION GUIDE	2102229	

* *Not illustrated in exploded view*

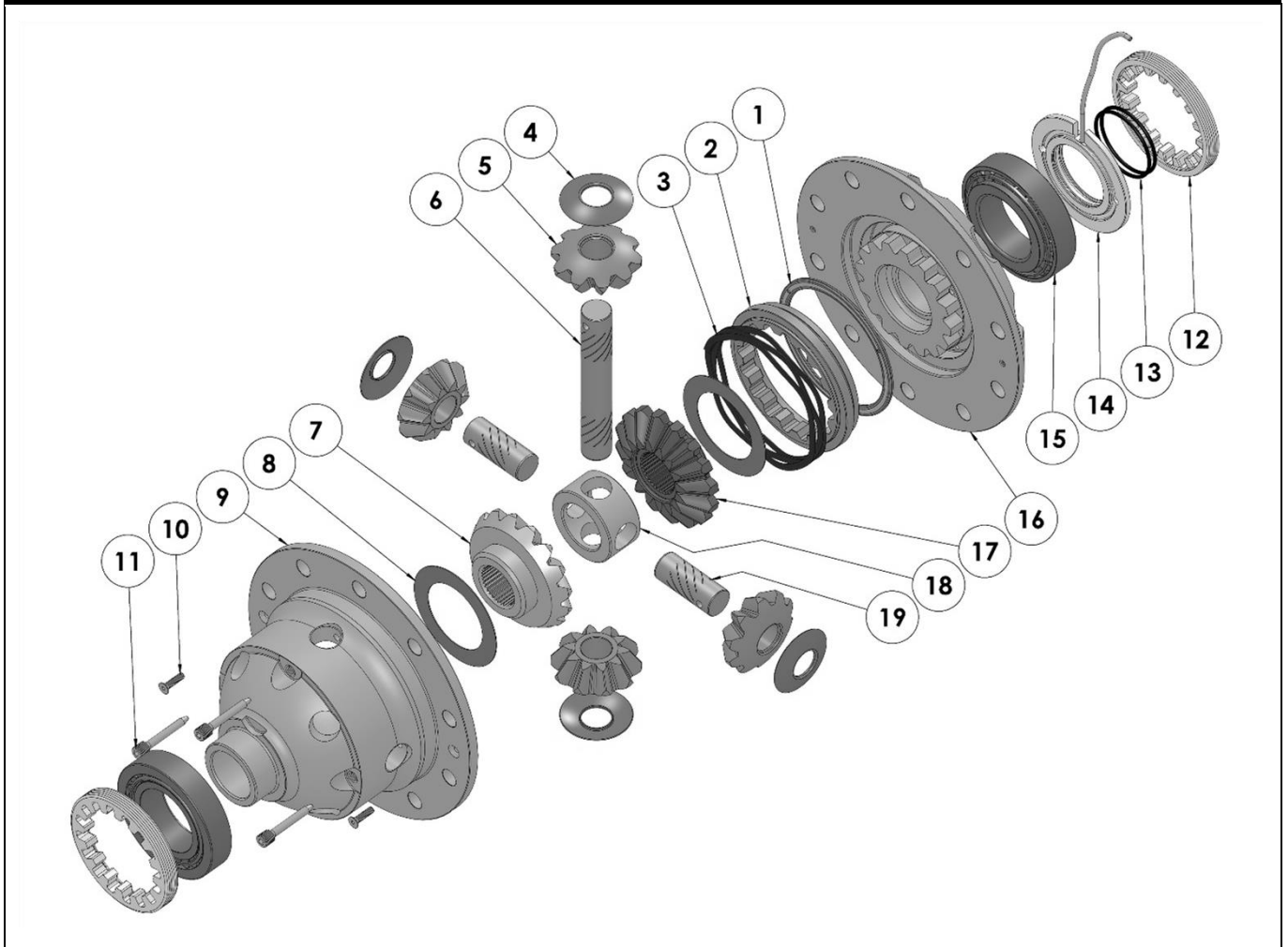
NOTES

- 1 For replacement O-rings use only BS138 Viton 75.
- 2 Available only as complete 6 gear set # 728H191.
- 3 Available only as complete thrust washer kit #730H01.
- 4 All diffs produced before serial #17070001 came with 5mm air connection system. For information contact ARB.
- * Fitment to OE locker models will require axle shafts from non-locked models, see Mercedes or Nissan.
OE diff lock actuator plug will need to be short circuited to avoid warning lights coming on.

RD229

Nissan D23 RR, 34 Spline

EXPLODED DIAGRAM



SPECIFICATIONS

Axle Spline	34 tooth, Ø34.9mm [1.37"]
Ratio Supported	All
Ring Gear ID	134.0mm [5.28"]
Ring Gear OD	215mm [8.46"]
Ring Gear Bolts	12 bolts on Ø173.9mm [6.85"]
Ring Gear Torque	198Nm [146 ft-lb]
Backlash	0.15-0.20mm [0.006-0.008"]
Bearing Cap Torque	88Nm [65 ft-lb]