

RD259

Dodge Ram 1500, 31 SPL 9.25" Rear ZF C-clip Axle

PARTS LIST

ITEM #	QTY	DESCRIPTION	PART #	NOTES
01	1	FLANGE CAP KIT	027357SP	
02	1	BONDED SEAL	160702SP	
03	1	CLUTCH GEAR & WAVESPRING KIT	050901SP	
04	1	WAVESPRING	150701SP	
05	2	SIDE GEAR THRUST WASHER	SEE NOTE	3
06	1	SPLINED SIDE GEAR	SEE NOTE	2
07	3	PINION THRUST WASHER	SEE NOTE	3
08	3	PINION GEAR	SEE NOTE	2
09	1	SHORT CROSS SHAFT	060403SP	
10	1	LONG CROSS SHAFT	060204SP	
11	1	COUNTERSUNK SCREW (PK OF 2)	200213SP	
12	1	DIFFERENTIAL CASE	013057SP	
13	1	RETAINING PIN SET (PK OF 4)	120601SP	
14	2	TAPERED ROLLER BEARING	NOT SUPPLIED	
15	2	ADJUSTER NUT	NOT SUPPLIED	
16	1	SEAL HOUSING BRACKET	220228	
17	1	SEAL HOUSING O-RINGS (PK OF 2)	160257-2	1
18	1	SEAL HOUSING KIT	081830SP	
19	1	SPIDER BLOCK	070902SP	
20	2	C-CLIP	NOT SUPPLIED	
21	1	SIDE GEAR	SEE NOTE	2
*	1	HEX TOOL	220229	
*	1	BULKHEAD FITTING KIT (BANJO TYPE)	170114	
*	1	AIR LINE (6mm DIA X 6m LONG)	170314SP	
*	1	SOLENOID VALVE (12V)	180103	
*	1	SWITCH RR LOCKER	180224	
*	1	CABLE TIE (PK OF 25)	180305	
*	1	OPERATING & SERVICE MANUAL	210200	
*	1	INSTALLATION GUIDE	2102259	

* *Not illustrated in exploded view*

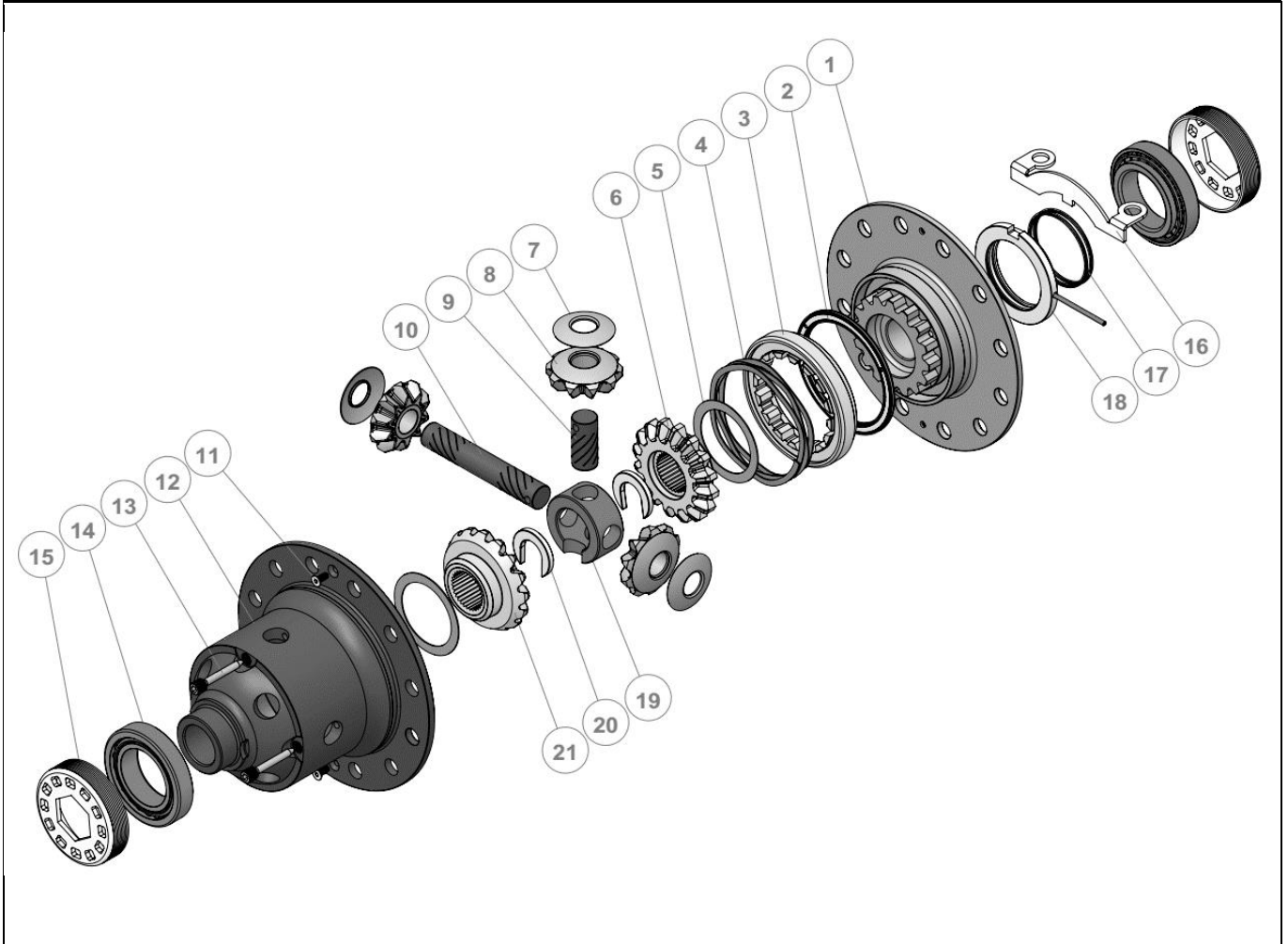
NOTES

- 1 For replacement O-rings use only BS142 Viton 75.
- 2 Available only as complete 5 gear set # 728H341C
- 3 Available only as complete thrust washer kit #730H03

RD259

Dodge Ram 1500, 31 SPL 9.25" Rear ZF C-clip Axle

EXPLODED DIAGRAM



SPECIFICATIONS

Axle Spline	31 tooth, Ø33.7mm [1.33"]
Ratio Supported	All
Ring Gear ID	144.5mm [5.69"]
Ring Gear OD	234.86mm [9.25"]
Ring Gear Bolts	12 bolts on Ø180.0mm [7.09"]
Ring Gear Torque	225Nm [166 ft-lb]
Backlash	0.12-0.20mm [0.005-0.008"]
Bearing Cap Torque	136Nm [100 ft-lb]

ARB Corporation Ltd • 42-44 Garden St Kilsyth VIC 3137 Australia
ARB 4X4 Accessories USA • 720 SW 34th St Renton WA 98057 USA
Australia & International Customer Service • +61 3 9761 6622
North America Customer Service • Toll Free 866 293 9078
www.arb.com.au (AUS & Int) www.arbusa.com (N. America)

