

**RD47**

AMC Model 20,2.73:1

**\*\*THIS MODEL WAS SUPERSEDED BY RD187, CROSSES OUT PARTS NOT AVAILABLE**

### PARTS LIST

| ITEM # | QTY | DESCRIPTION                        | PART #   | NOTES |
|--------|-----|------------------------------------|----------|-------|
| 01     | 1   | FLANGE CAP                         | 022201   |       |
| 02     | 1   | CLUTCH GEAR                        | 050102   |       |
| 03     | 1   | DIFFERENTIAL CASE                  | 011502   |       |
| 04     | 1   | RETURN SPRINGS (PK OF 4)           | 150101SP |       |
| 05     | 1   | RETAINING PIN SET (PK OF 2)        | 120102SP |       |
| *      | 1   | RETAINING PIN SET (PK OF 2)        | 120302SP |       |
| 06     | 4   | SHORT CROSS SHAFT                  | 060303   |       |
| 07     | 1   | S GEAR THRUST WASHER (PK OF 2)     | 151003SP |       |
| 08     | 1   | PISTON                             | 040103SP |       |
| 09     | 1   | BONDED SEAL                        | 160701SP |       |
| 10     | 1   | CYLINDER CAP                       | 030115   |       |
| 11     | 1   | SEAL HOUSING O-RINGS (PK OF 2)     | 160208-2 | 1     |
| 12     | 1   | CYL CAP RETAINING BOLT (PK OF 8)   | 200205SP |       |
| 13     | 1   | LOCKING TAB (8mm) (PK OF 8)        | 150401SP |       |
| 14     | 1   | TAPERED ROLLER BEARING             | 160104   | 2     |
| 15     | 1   | SEAL HOUSING KIT                   | 080503SP |       |
| 16     | 1   | SHIM KIT                           | SHK008   |       |
| *      | 1   | MASTER SHIM                        | 150342   |       |
| 17     | 1   | SPLINED SIDE GEAR                  | SEE NOTE | 3     |
| 18     | 1   | PINION THRUST WASHER (PK OF 4)     | 151101SP |       |
| 19     | 4   | PINION GEAR                        | SEE NOTE | 3     |
| 20     | 1   | SPIDER BLOCK                       | 070401   |       |
| 21     | 1   | THRUST BLOCK                       | 110506SP |       |
| 22     | 1   | SIDE GEAR                          | SEE NOTE | 3     |
| *      | 1   | BULKHEAD FITTING KIT (O-RING TYPE) | 170111   |       |
| *      | 1   | PUSH-IN FITTING (5mm to 1/8"BSPP)  | 170201SP |       |
| *      | 1   | AIR LINE (5mm DIA X 6m LONG)       | 170301SP |       |
| *      | 1   | SOLENOID VALVE (12V)               | 180103   |       |
| *      | 1   | SWITCH FR OR RR LOCKER             | 180225   |       |
| *      | 1   | CABLE TIE (PK OF 25)               | 180305   |       |
| *      | 1   | OPERATING & SERVICE MANUAL         | 210200   |       |
| *      | 1   | INSTALLATION GUIDE                 | 210247   |       |

\* *Not illustrated in exploded view*

### NOTES

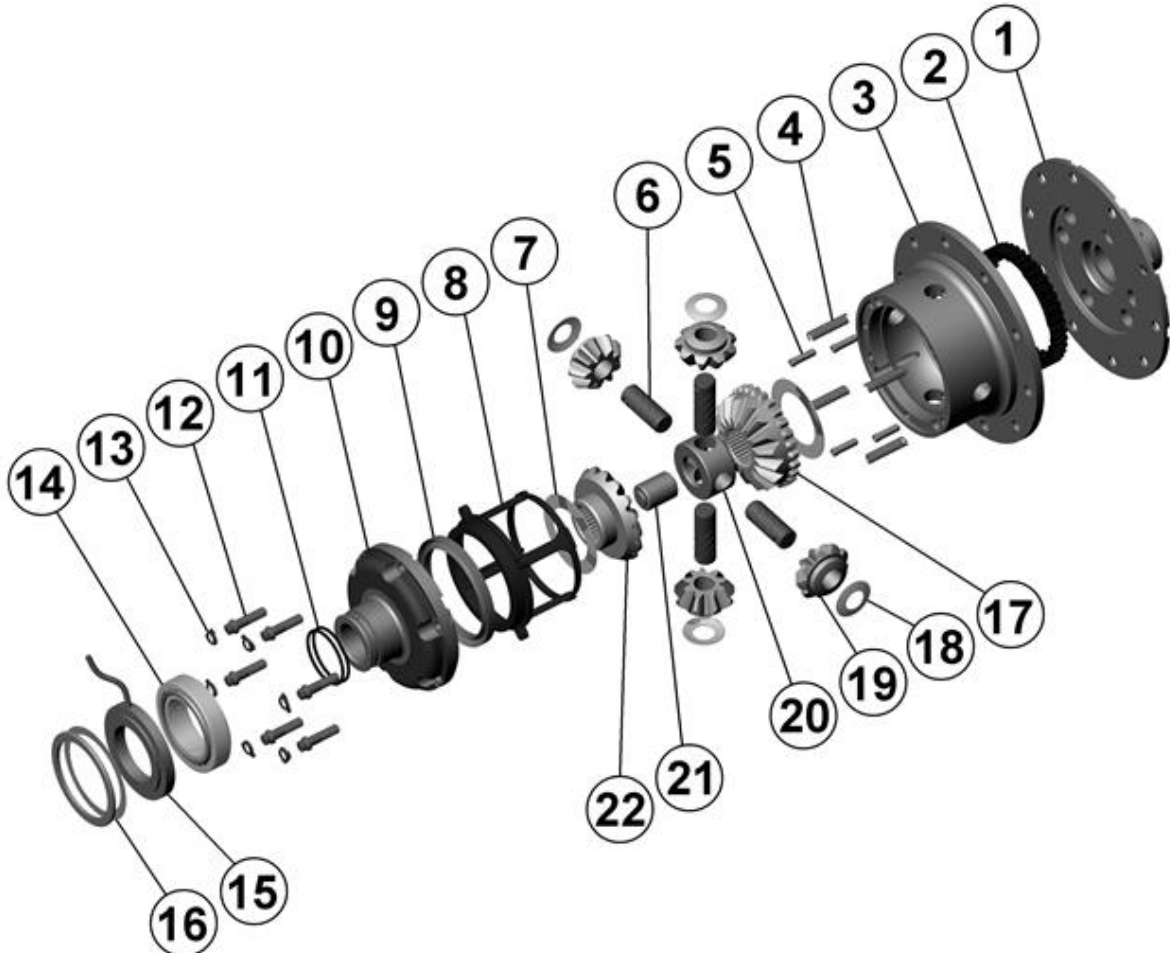
- 1 For replacement O-rings use only BS030 Viton 75.
- 2 For replacement bearing use Timken part #LM603049 / LM603011.
- 3 Available only as complete 6 gear set # 728B401
- For ratios of 3.08:1 & up refer to RD60 ([Section 2.60](#)).

**RD47**

AMC Model 20,2.73:1

**\*\*THIS MODEL WAS SUPERSEDED BY RD187, CROSSES OUT PARTS NOT AVAILABLE**

### EXPLODED DIAGRAM



### SPECIFICATIONS

|                 |                           |
|-----------------|---------------------------|
| Axle Spline     | 29 tooth, Ø31.8mm [1.25"] |
| Ratio Supported | 2.73:1                    |
| Ring Gear ID    | 136.6mm [5.38"]           |
| Ring Gear OD    | 225.6mm [8.88"]           |
| Ring Gear Bolts | 8 bolts on Ø165mm [6.50"] |