

RD55B

Ford 9",31 SPL**

****THIS MODEL WAS SUPERSEDED BY RD119, CROSSED OUT PARTS NOT AVAILABLE**

PARTS LIST

| ITEM # | QTY | DESCRIPTION | PART # | NOTES |
|--------|-----|-----------------------------------|----------|-------|
| 01 | 1 | SEAL HOUSING WASHER | 151204 | |
| 02 | 1 | SEAL HOUSING KIT | 081301SP | |
| 03 | 1 | SEAL HOUSING O-RINGS (PK OF 2) | 160220-2 | 1 |
| 04 | 2 | SEAL HOUSING BRACKET | 220102 | |
| 05 | 1 | SWIVEL AIR FITTING (5mm) | 170209 | |
| 06 | 1 | SEAL HOUSING COLLAR | 081302 | |
| 07 | 1 | TRANSFER TUBE O-RING | 160234 | |
| 08 | 3 | GRUB SCREW (KNURL POINT, M6) | 200305 | |
| 09 | 3 | GRUB SCREW (DOG POINT, M6) | 200306 | |
| 10 | 2 | SHORT CROSS SHAFT | 060307 | |
| 11 | 1 | COUNTERSUNK SCREW (PK OF 2) | 200209SP | |
| 12 | 1 | DIFFERENTIAL CASE | 012204 | |
| 13 | 1 | LONG CROSS SHAFT | 060107SP | |
| 14 | 1 | SIDE GEAR | SEE NOTE | 2 |
| 15 | 4 | PINION GEAR | SEE NOTE | 2 |
| 16 | 1 | SPIDER BLOCK | 070501SP | |
| 17 | 1 | PINION THRUST WASHER (PK OF 4) | 151106SP | |
| 18 | 1 | SPLINED SIDE GEAR | SEE NOTE | 2 |
| 19 | 1 | S GEAR THRUST WASHER (PK OF 2) | 151003SP | |
| 20 | 1 | BONDED SEAL | 160703SP | |
| 21 | 1 | CLUTCH GEAR | 050603 | |
| 22 | 1 | RETURN SPRINGS (PK OF 12) | 150107SP | |
| 23 | 1 | FLANGE CAP | 022302 | |
| 24 | 10 | RING GEAR BOLT | 200601 | |
| 25 | 1 | INNER COMPRESSION NUT | 170613 | |
| * | 1 | BULKHEAD FITTING KIT (5 to 5mm) | 170104 | |
| * | 1 | PUSH-IN FITTING (5mm to 1/8"BSPP) | 170201SP | |
| * | 1 | AIR LINE (5mm DIA X 6m LONG) | 170301SP | |
| * | 1 | TUBE SUPPORT SPRING (internal) | 170702 | |
| * | 1 | SOLENOID VALVE (12V) | 180103 | |
| * | 1 | SWITCH FR OR RR LOCKER | 180225 | |
| * | 1 | CABLE TIE (PK OF 25) | 180305 | |
| * | 1 | OPERATING & SERVICE MANUAL | 210200 | |
| * | 1 | INSTALLATION GUIDE | 210255 | |

* *Not illustrated in exploded view*

NOTES

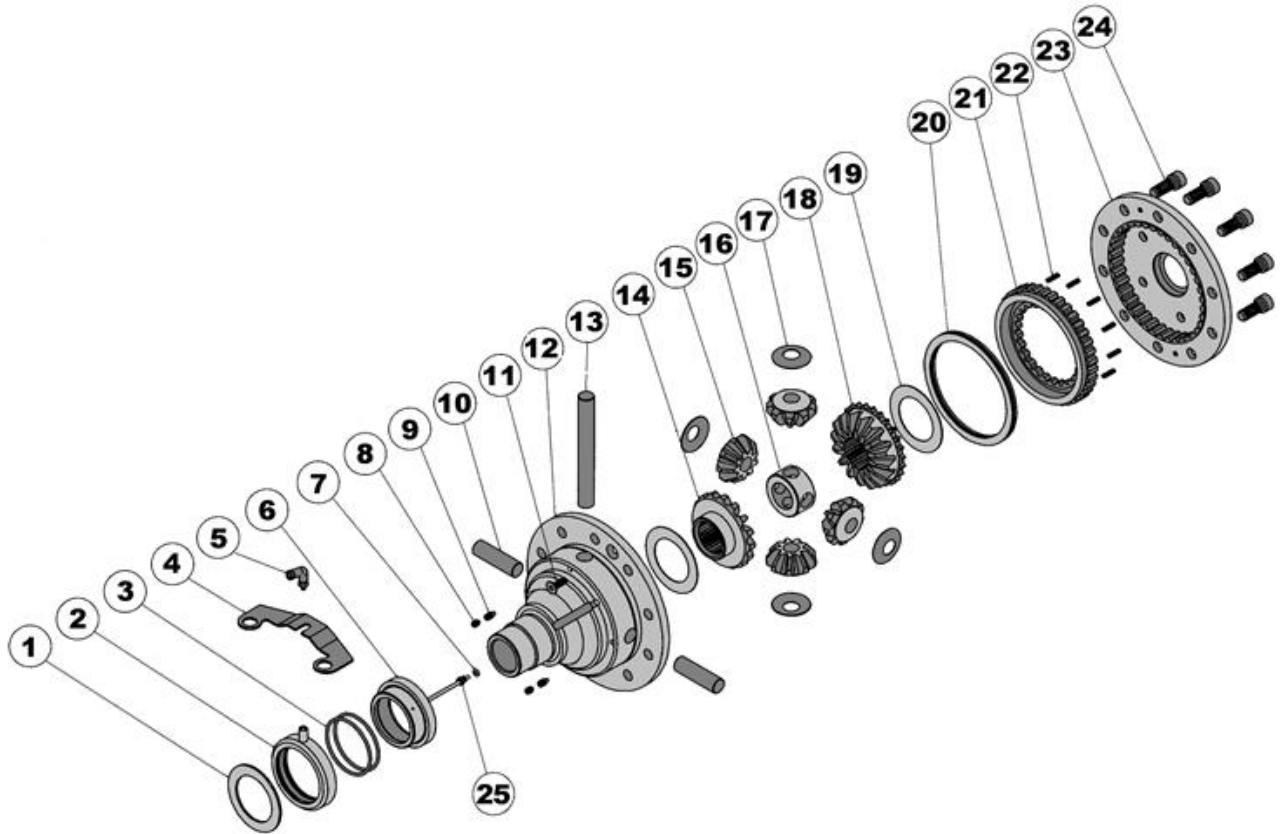
- For replacement O-rings use only BS141 Viton 75.
Standard ring gear bolts must be replaced with grade 12 cap screws (supplied).
For the 35 spline Ford 9" refer to RD99 ([Section 2.99](#)).
- Available only as complete 6 gear set # 728B412

RD55B

Ford 9",31 SPL**

****THIS MODEL WAS SUPERSEDED BY RD119, CROSSED OUT PARTS NOT AVAILABLE**

EXPLODED DIAGRAM



SPECIFICATIONS

| | |
|--------------------|----------------------------|
| Axle Spline | 31 tooth, Ø33.5mm [1.32"] |
| Ratio Supported | All |
| Ring Gear ID | 127.0mm [5.00"] |
| Ring Gear OD | 229mm [9.0"] |
| Ring Gear Bolts | 10 bolts on Ø152mm [6.00"] |
| Ring Gear Torque | 95Nm [70 ft-lb] |
| OEM Backlash | 0.25-0.41mm [0.010-0.016"] |
| Non-OEM Backlash | 0.18-0.25mm [0.007-0.010"] |
| Bearing Cap Torque | 81Nm [60 ft-lb] |

ARB Corporation Ltd ▪ 42-44 Garden St Kilsyth VIC 3137 Australia
ARB 4X4 Accessories USA ▪ 720 SW 34th St Renton WA 98057 USA
Australia & International Customer Service ▪ +61 3 9761 6622
North America Customer Service ▪ Toll Free 866 293 9078
www.arb.com.au (AUS & Int) www.arbusa.com (N. America)

